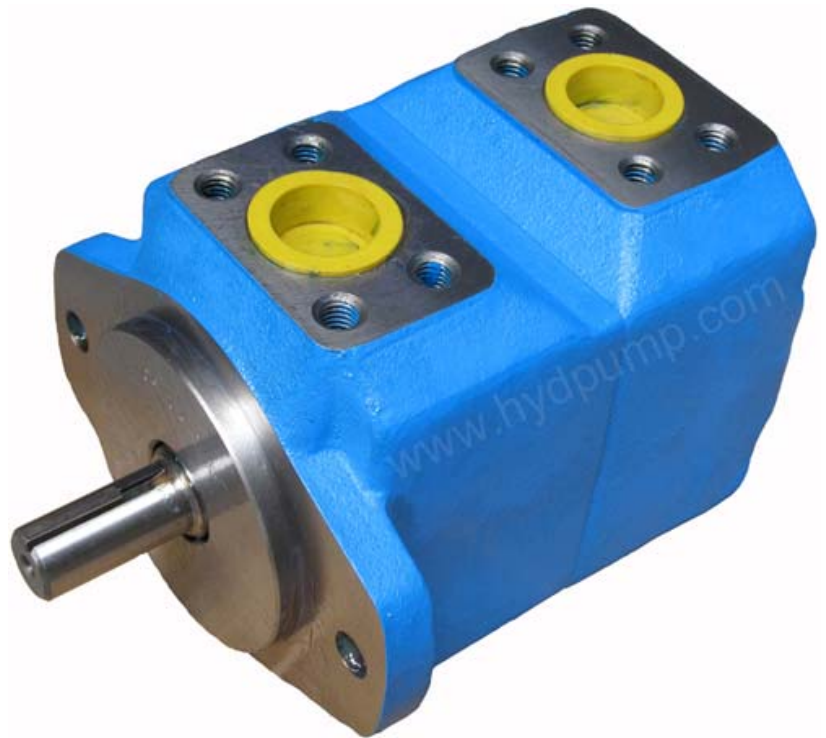




# Eaton Vickers Vane Motor Cartridge

Hydraulic Vickers vane motor 26M 36M 46M 51M 25M 35M 45M 50M



## Features

Replacement parts for High Torque Vickers Hydraulic Vane Motor ( standard model 25M, 35M, 45M 50M and heavy duty bearing 26M, 36M, 46M, 51M ), with the cartridge independent of the shaft, allowing for easy change of flow capacity and field servicing without removing the motor from its mounting.

High speed and high-pressure motors ranging from 43.9 to 193.2 cm<sup>3</sup> / r with 172 bar of maximum pressure and 9 torque rating choices.

The internal inlet chambers are equally and diametrically opposed resulting in balanced in radial loads.

Thus, the motors are hydraulically balanced which reduced wear and heat from friction.

These motors provide 90% efficiency due to dual pressure plates, which produced low internal leakage.

Motors are bi-rotational, simply reversed by reversing in flow direction.

## Ordering Code and Specifications

## Cartridge Kit for Vane Motor

Ordering code: 45M-185

**Ring size - Nominal torque rating (lb in/100psi)**

**25M** - 30, 42, 55, 65

**35M** - 80, 95, 115

**45M** - 130, 155, 185

**50M** - 220, 255, 300

**Standard model:** 25M, 35M, 45M and 50M

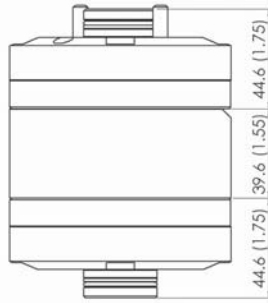
Heavy duty bearing: 26M, 36M, 46M, and 51M

## Specifications

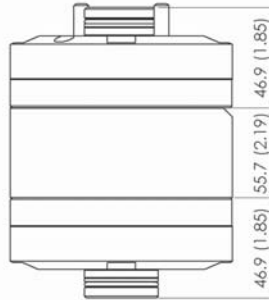
Model Series	Torque Nm/6.9 bar (lb in/100 psi)	Displacement cc/(in <sup>3</sup> /r)	Flow input/required @1200 r/min L/min (US gpm)	Maximum speed & pressure
25M	3,3(30)	29,0(1,77)	34,8 (9.19)	3600 r/min @ 34 bar (500 psi) 4000 r/min @ 34 bar (500 psi)
	4,7 (42)	43,9 (2.68)	52,6 (13.9)	
	6,2 (55)	57,7 (3.52)	69,3 (18.3)	
	7,3 (65)	68,7 (4.19)	82,5 (21.8)	
35M	9,0 (80)	83,6 (5.10)	100,3 (26.5)	2600 r/min @ 155 bar (2250 psi) 3000 r/min @ 172 bar (2500 psi)
	10,7 (95)	100,3 (6.12)	120,4 (31.8)	
	13,0 (115)	121,9 (7.44)	146,1(38.6)	
45M	14,7 (130)	138,0 (8.42)	165,4 (43.7)	2800 r/min @ 34 bar (500 psi) 3200 r/min @ 34 bar (500 psi) 2200 r/min @ 155 bar (2250 psi) 2400 r/min @ 172 bar (2500 psi)
	17,5 (155)	163,2 (9.96)	195,7 (51.7)	
	20,9 (185)	193,2(11.79)	232,0 (61.3)	
50M	24,9 (220)	231,2 (14.11)	277,5 (73.3)	
	28,8 (255)	268,1 (16.36)	321,8 (85.0)	
	33,9 (300)	317,1 (19.35)	380,4 (100.5)	



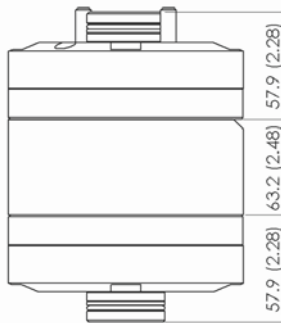
### Cartridge Kit 25M Installation Dimensions mm (inch)



### Cartridge Kit 35M Installation Dimensions mm (inch)



### Cartridge Kit 45M Installation Dimensions mm (inch)



Part number of

Vane motor M series cartridge kit

Size	Old Assembly #	New Assembly #
25M42	923160-9	R923160
25M55	923161-9	R923161
25M65	923162-9	R923162
35M80	923165-9	R923165
35M95	923166-9	R923166
35M115	923167-9	R923167
45M130	923111-9	R923111
45M155	923110-9	R923110
45M185	923109-9	R923109
50M220	923099-9	R923099
50M255	923100-9	R923100
50M300	923101-9	R923101

Hydraulic Vickers vane motor					
25M30A1A20117	35M115A1C20141	F8-25M55A11C20	45M130A1C20141	25M35A1C20	25M42A1C20
25M30A1C20117	F8-35M95A11C20	F8-25M65A1C20	F8-45M130A11C20	25M65A11C20139	35M80A1C20141
25M42A11C20	F8-35M95A1C20	F8-25M65A11A20	50M300A11C20L143	F8-25M42A1C20	35M95A1C20141
25M55A11C20	45M130A1A20	F8-25M65A11C20	50M300A11C20R144	F8-25M42A11C20	45M155A1C20
25M65A1A20	45M130A1C20	35M95A11C20	50M300A11C20139	F8-25M55A1C20	50M220A11C20139
25M65A1C20	45M130A11A20	35M80A11C20	F8-50M300A11C20L143	45M185A1A20	50M255A1C20141
25M65A11C20	45M130A11C20	35M115A11C20	F8-50M300A11C20L143L	45M185A1C20	35M95A1C20
25M55A1A20	45M155A11C20	35M80A1A20	50M300A11C20114	45M130A1C20139	50M220A1C20141
25M55A1C20	45M185A11C20	35M80A1C20	50M255A11A20114	45M155A1C20141	50M300A1C20141
25M42A1A20	45M155A1A20	35M95A1A20	50M300A1A20114	45M185A1C20141	F8-50M300A1C20114
50M255A1C20114	35M115A1C20	50M220A1C20114	50M300A1C20114	35M115A1A20	F8-35M115A11C20
26M30A1A20117	36M115A1C20141	F8-26M55A11C20	46M130A1C20141	26M36A1C20	26M42A1C20
26M30A1C20117	F8-36M95A11C20	F8-26M65A1C20	F8-46M130A11C20	26M65A11C20139	36M80A1C20141
26M42A11C20	F8-36M95A1C20	F8-26M65A11A20	51M300A11C20L143	F8-26M42A1C20	36M95A1C20141
26M55A11C20	46M130A1A20	F8-26M65A11C20	51M300A11C20R144	F8-26M42A11C20	46M155A1C20
26M65A1A20	46M130A1C20	36M95A11C20	51M300A11C20139	F8-26M55A1C20	51M220A11C20139
26M65A1C20	46M130A11A20	36M80A11C20	F8-51M300A11C20L143	46M185A1A20	51M265A1C20141
26M65A11C20	46M130A11C20	36M115A11C20	F8-51M300A11C20L143L	46M185A1C20	36M95A1C20
26M55A1A20	46M155A11C20	36M80A1A20	51M300A11C20114	46M130A1C20139	51M220A1C20141
26M55A1C20	46M185A11C20	36M80A1C20	51M265A11A20114	46M155A1C20141	51M300A1C20141
26M42A1A20	46M155A1A20	36M95A1A20	51M300A1A20114	46M185A1C20141	F8-51M300A1C20114
51M265A1C20114	36M115A1C20	51M220A1C20114	51M300A1C20114	36M115A1A20	F8-36M115A11C20